



ASSELEC

CATÁLOGO 2025

Asesores de Servicios Industriales y
Proveedores de Material Eléctrico
Especializado SA de CV



ÍNDICE

Tabla de contenido

01

DELO

Adhesives

UV and light-curing adhesives
Heat-curing adhesives
Dual-curing adhesives
2C Adhesives
Anaerobic-Curing Adhesives
Cyanoacrylates
Silicones

Equipments

UV lamps
DELOLUX 20 /202 /203 /204
DELO LUX SERIE 50
DELO LUX 80
DELOLUX pilot S series
Dispensing systems

02

Plasmatreat

Statics Plasma Jets

PFW10
PFW20

Plasma Rotary

RD1004
RD2005

Plasma GeneratorOpenair-Plasma

FG5001 /FG5001S

High-performance generators:

FG5002/ FG5005
FG5002S/FG5005S

PlasmaPlus

03

Brighton Science

Surface Analyst TM

BConnect

Instruments that quantifies your level of surface preparation from lab to manufacturing floor.

04

ProEx

Automated Selective Coating

ProEx 5
ProEx 7

05

Janome

Desk Line

JR300 Series
JR3000T Dual Table Robot
JR3000ERT/EBV-PCB cutter

Cartesian Robot

iSerie i22X
iSerie JC-3
iSerie JS3

SCARA

Press

Screw machine in general

06

TAEHA

PRO-PUMP SERIES

PCP Series 1k PRO-PUMP
PCP Series 2k PRO-DUO PUMP

Spec Series

SPEC-QV
SPEC-PP
SPEC CP

Dispensing Unit

THE Series
TP-50,RDU-200
DV SERIES

Dispensing System

SEMI-AUTO SYSTEM
PROS-100,VDS

Feeding System

MFS / MFE
PROCP

07

ASSELEC

Dyne Inks / Pens

Surface tension
Using test inks

Dispensing

Cartridge
Luer locks needles
Mixing tubes
WIPERS



Dar clic en el elemento
para regresar al menú

ASSELEC



DELO

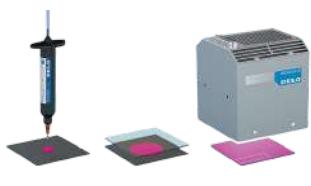
AUTOMOTIVE
INDUSTRY
CURING
DISPENSING
ELECTRONICS
MANUFACTURING
ADHESIVES
BONDING
AUTOMATED
MOBILITY
LIGHTING
CURING PROCESSES

ADHESIVES



UV and light-curing adhesives.

Light-curing adhesives are cured by means of UV lamps which usually generate 100 to 1000 times the intensity of normal daylight. These UV lamps are available as area or spot lamps and use LEDs as their light source. Our UV lamps therefore offer you state-of-the-art lamp technology.



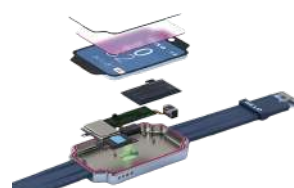
- Curing at room temperature within seconds
- Curing with light wavelengths of 365, 400 and 465 nm
- Particularly suitable for in-line production
- Low-energy curing process with LED lamps

[Data sheet](#)



Dual-curing

Dual-curing adhesives offer the benefits of light-curing systems without compromising on reliability, bond strength and processing quality. They also ensure that the adhesive in the finished product is fully cured and permit maximum bonding precision in complex modules. They offer a high degree of flexibility in production and allow users more freedom in the development of their production processes.



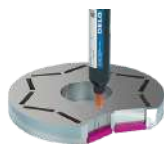
- Good timing of adhesive curing for fast processes
- Fast fixation by means of UV and light curing
- Second curing mechanism for shadowed areas
- Heat or humidity curing depending on the components to be joined and the process

[Data sheet](#)



Heat-curing

Heat curing is often used for structural adhesives, which are used as an alternative to traditional joining methods such as riveting or welding. Curing is performed at temperatures ranging from +60 °C to +180 °C. Air convection and tunnel ovens are generally used for the curing process. In some cases, induction can reduce the curing time 70-fold compared to convection ovens. Typical curing times are therefore between 60 seconds and 60 minutes. It is important to note that the temperature is applied to the adhesive and a possible heating time of the component must be taken into account.



- Particularly suitable for structural bonding
- In-line and batch processes possible
- For adhesives with maximum media and temperature resistance

[Data sheet](#)



2C Adhesives

2C epoxy resins are suitable for structural bonding and protective potting. It secures the components against slipping in just a couple of seconds, so that processing of the entire assembly can go ahead immediately. Reliable final curing - even in shadowed areas - is the same as for regular 2C products at room temperature or sepped up by heat.



- Fast light fixation within a few seconds
- Reliable final curing at room temperature
- Storage / transport at room temperature
- Low outgassing, low shrinkage



Anaerobic-Curing

Colloquially referred to as metal adhesives, or more commonly as screw locks, cure under the absence of oxygen and through contact with metal ions on the metal surface. After curing for just a few minutes, the components to be bonded can continue to be further processed. The process speed can be increased by additional light fixation or the use of activators or primers.



- Curing process with the lowest energy input
- Particularly suitable for batch production

[Data sheet](#)



Cyanoacrylate

The cyanoacrylate adhesive's quick reaction enables components to bond within seconds. Ideal conditions for curing are met at 40 to 70 percent relative humidity. After drying is completed, the bond cannot be adjusted - but it is lasting and stable. CA adhesive is a preferred solution for small area adhesion.



- Quick-curing - in a matter of seconds
- Super-strong adhesion across different materials
- Easy-to-use and hassle-free dispensing of cyanoacrylate adhesives
- Suitable especially for small components and parts
- Optimal fixing thanks to very thin adhesive films

ADHESIVES/UV LAMPS DELOUX



Silicones

They are two types one- and two-component products. Curing of our one-component silicone adhesives happens by way of moisture. Two-component DELO-GUM silicone adhesive cures in a matter of minutes – without requiring a humid environment. Thicker layers and extensive adhesion areas take a bit longer until they are fully cured.



- Suitable for lastingly elastic, highly flexible joints
- Temperature-resistant
- Great resistance to chemicals
- Excellent resistance to weather and aging
- Consistently high flexibility with this silicone adhesive.

[Data sheet](#)



Dispensing systems

Is precisely adapted to its high-tech adhesives and enables optimum production processes. You benefit from cost-effective adhesive processing that can be integrated into the process flexibly. Jet systems, in particular, must operate precisely and fast, and must be compact. Precision is necessary for the accurate and reproducible application of tiny adhesive quantities; speed enables fast processes, while a compact design allows integration into any production system.



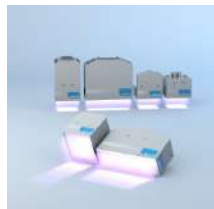
- Contactless
- Needle dispensing
- Screen and stencil printing
- Manual dispensing

[Data sheet](#)



DELOLUX 20 /202 /203 /204

They are especially suitable for large areas that need consistent illumination for curing: By placing DELOLUX 20 / DELOLUX 202 / DELOLUX 203 / DELOLUX 204 flood curing lamps in a row, it is possible to bring light evenly to large adhesion surfaces. In-series connection of these LED curing lamps is possible both on the x- and the y-axis.



- DELOLUX 20 and 202 - actively air-cooled lamphead (fan)
- DELOLUX 203 - passively cooled lamphead (preferably via water cooling profiles)
- DELOLUX 204 - integrated water cooling profile

[Data sheet](#)



DELOLUX 50 | 502 | 503 | 504 | 505

DELOLUX 50 UV curing lamp is an excellent option for quick and precise curing of adhesives. With intensities of up to 18,000 mW/cm², this UV spotlight can realize exposure times of under a second. Furthermore, this UV spot lamp isn't just space-efficient but especially reliable: Consistent light intensity ensures process security, when working with DELOLUX 50 UV curing lamp.



- More than 20,000 h lifetime can be achieved
- Independent irradiation of multiple bonding areas
- Easy integration into production systems thanks to the small dimensions of the LED heads
- Perfectly suitable LED heads available for a variety of applications
- UV curing lamp with more than 20,000 active hours

[Data sheet](#)



DELO LUX 80

This unique LED spotlight system enables fast curing of regular light- and UV-curing adhesives! What is unique about this LED spot lamp system is that the light intensity is both consistent and at full power – immediately after turning it on.



- Homogeneous light power and temperature distribution of the entire irradiated area
- LEDs cooled by closed Coldguide® cooling circuit
- Full and stable light power directly after switched on
- Adhesive curing in just seconds
- Lifetime of LED spotlights up to 20 times longer

[Data sheet](#)



DELOLUX Pilot S series

The DELOLUX pilot S Series control unit enables power supply control for up to four spot lamp heads. For DELOLUX 50 spot lamps, you can choose between two powerful models:

- DELOLUX pilot S4i = Integrated model for installation in the control panel
- DELOLUX pilot S4T = with touch function



- Controls power supply for up to four spot lamps
- Process control
- User management
- Status messages

[Data sheet](#)



ADHESIVES/UV LAMPS DELOUX/DELO-DOT



DELO-DOT PN5 | DELO-DOT PN5 LV

The DELO-DOT PN5 and DELO-DOT PN5 LV pneumatic jet valves are optimal for complex microdispensing. Thanks to very short cycle times and reproducible processes, these valves are ideal for industrial series production. With a dispensing frequency of up to 300 Hz and the highest plunger speeds, the valves deliver maximum performance. Even highly viscous materials can be applied completely contact-free in the smallest diameters of <250 µm.



- Reliable and precise dispensing, even of highly viscous, complex materials
- Reproducible results in different drop sizes due to individual power setting and exchangeable nozzles
- No-tool change of nozzles and fluidic plunger thanks to bayonet lock

[Data sheet](#)



ASSELEC



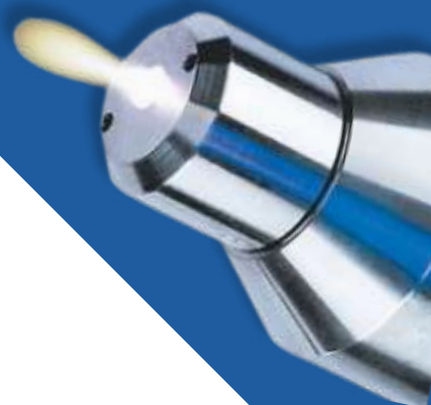
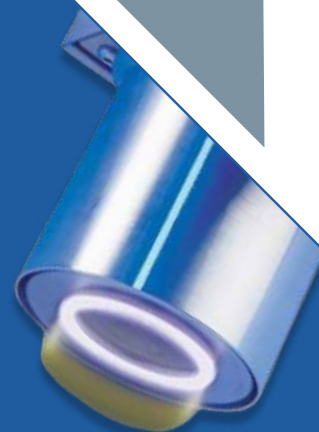
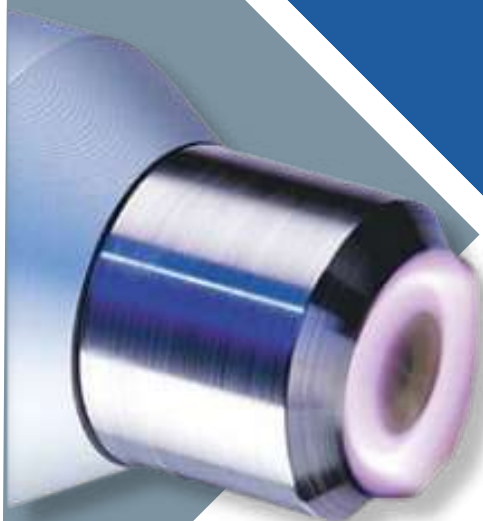
DELO

CURING PROCESSES
ELECTRONICS

MANUFACTURING
ADHESIVES
MOBILITY

INDUSTRY
DISPENSING
CURING

ASSELEC



plasmatreat

AUTOMATION
BATTERIES
ELECTRONICS
PACKING
MEDICAL
AEROSPACE
INDUSTRY

CATÁLOGO PLASMATREAT



PLASMA JETS



Statics Plasma Jets PFW10 - PFW20

The plasma jets directed onto the material are used to generate and spread the plasma (cold plasma is generated). The plasma is generated inside the jet by a high voltage between a stator and a rotor and is blown out through the jet head using working gas.



- Limpieza con plasma y activación de plásticos, metales y vidrio
- Películas y componentes tridimensionales
- Carcasas para faros delanteros de polipropileno: pretratamiento preciso de la ranura de adhesión
- Etiquetado de botellas: uso de sistemas de adhesivos de base acuosa integrados en la producción



RD1004 plasma rotary

The RD1004 plasma rotary jet is used to generate cold plasma. It is especially suited for thermally sensitive and geometrically complex surfaces and materials. The patented rotary system evenly distributes the plasma effect on the materials to be treated. Here, the surface is swept several times briefly in a pulse-like manner, which is a very effective form of cleaning and activation – with very low heat input at the same time.



[Data sheet](#)

- EPDM and TPE profiles: inline profile treatment prior to bonding, flocking, and applying anti-friction coatings
- Clearcoat treatment of nonpolar varnish in the automotive industry
- PCBs: potential-free pretreatment prior to printing and overmolding
- Home appliances, high-gloss polypropylene (PP): gentle pretreatment prior to pad printing
- Custom applications requiring different outlet angles, such as large holes, grooves, etc.



FG5001S Plasma Generator

The FG5001S Plasma Generator is the basic unit of the Plasmatreat generator 5000 series. It is distinguished by its particularly compact design – allowing space-saving under-counter integration.



- System control and power control using integrated micro-controller
- Power output: 1000 VA for activating a maximum of two plasma jets
- Voltage supply of 100 -240 VA
- Operating temperature range: 0-35 degrees Celsius
- Operational data, such as voltage, power, frequency, error and status messages, in various languages.

[Data sheet](#)



FG5002S/5005S

The combination of the latest semiconductor technology, extensive sensors and maximum ease of use provide the Series 5000 generators with excellent performance. Using integrated analog monitoring of the pressure in the plasma chamber, of current, voltage and frequency – along with the analysis of light emitted by the plasma – the highest level of process reliability is achieved.



- Integration into complete systems
- Suitable for multiple shift operation under heightened environmental conditions
- Industrial applications where extensive protocol functions are required
- Robot-supported production systems

[Data sheet](#)



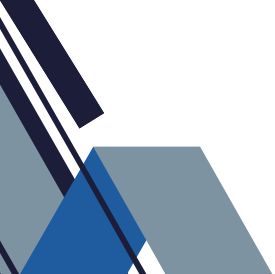
PlasmaPlus

The effect of plasma can be increased even further. With the aid of PlasmaPlus technology developed by Plasmatreat, selective nanocoatings are applied to surfaces that can be superhydrophobic and superhydrophilic, for example. This can be used to coat different materials such as plastic, glass, ceramics, metal, aluminum, PET film, textiles, etc. and create functionalized surfaces.



- Improvement of barrier characteristics of plastics for packaging using plasma polymer nanocoating
- Paintability with long-term stability and resulting high flexibility in manufacturing thanks to nanocoating with PlasmaPlus®
- PT Release coatings, for injection molding tools, allow a high number of process cycles without the components having to be stressed with release agents that contain silicone.
- PT Bond coatings assure long-term adhesion in the adhesive joint





ASSELEC



 **plasmatreat**

**PACKING
BATTERIES
AUTOMATION
ELECTRONICS
MEDICAL
AEROSPACE INDUSTRY**

ASSELEC



**Brighton
Science**

CATÁLOGO BS

AUTOMOTIVE
AUTOMOTIVE
MEDICAL DEVICE
MEDICAL DEVICE
CONSUMER GOODS
CONSUMER GOODS
ELECTRONICS
ELECTRONICS
AEROSPACE
INDUSTRY
AEROSPACE
INDUSTRY

BCONNECT



BConnect

The first and only surface intelligence platform enabling you to effortlessly assess surface readiness for bonding, coating or sealing at any point in the production process—and share information seamlessly across processes and functions, even continents.



- Detect - Use sensors (mobile or in-line) to determine surface readiness.
- Analyze - Identify patterns and trends; adjust processes accordingly.
- Share - Choose which individuals, teams, vendors or partners to share data with.

[Data sheet](#)



Surface Analyst

Is Brighton Science's handheld surface inspection device that allows manufacturers to rapidly quantify the quality of material surfaces after cleaning processes and before applications such as bonding, coating, sealing, painting or printing.



- A side-view measurement only measures 2 of those angles and can give an erroneous picture of the true surface state.
- Uses a patented top-down imaging approach to measure up to 200 points around the entire drop.

[Data sheet](#)



BC Inline

Each sensor—and user—is connected wirelessly to the BConnect platform, which makes the data accessible on multiple devices across departments, with customized access, depending on the user's role. Brighton's "Software as a Service" model means subscription prices are low and upgrades are ongoing and automatic.



- Integrate sensors into your production line for easy, automatic monitoring.

[Data sheet](#)



AUTOMOTIVE
AUTOMOTIVE

MEDICAL DEVICE
MEDICAL DEVICE

CONSUMER GOODS
CONSUMER GOODS

ELECTRONICS
ELECTRONICS

AEROSPACE INDUSTRY
AEROSPACE INDUSTRY

ASSELEC



automation company

PROEX

COATING
DISPENSING
AUTOMOBILES
RAILWAYS
SOLAR CELL
ASSEMBLY
MOBILE PHONE
ASSEMBLY
DRIVE MOTOR
MODULE

COATING MACHINE



PROEX5

Provides you with all the following systems at one platform and performs the same level of coating and dispensing various valve combinations interfaced with PC based program control for precise and quantitative discharge.



- Spray valve conformal coating system
- Film valve conformal coating system
- Needle valve dispensing system
- Jetting valve dispensing system
- High viscosity, abrasive silicone dispensing system
- Two-parts dispensing system

Data sheet



PROEX7

Through various valve combinations interfaced with PC based program control for precise and quantitative discharge.



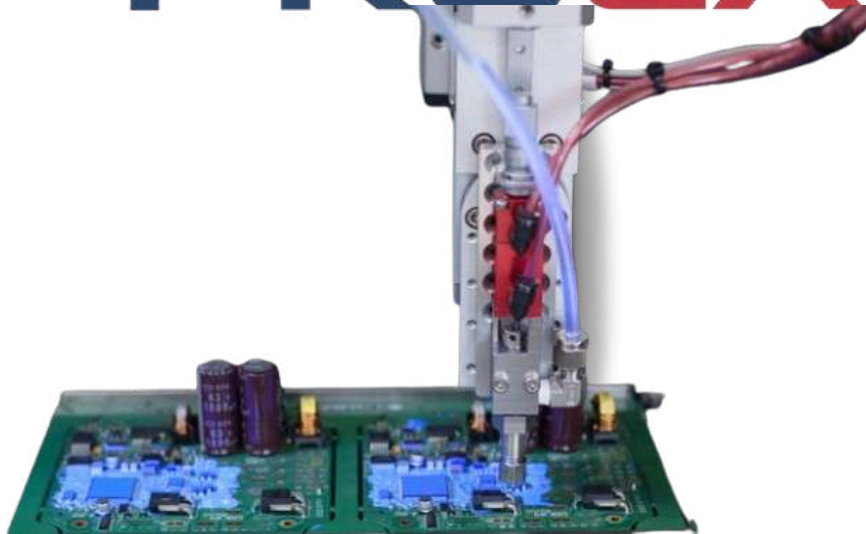
- Suitable for precise, quality dispensing in mass-production with 3-axis automated robot with a repeatability of $\pm 25 \mu m$
- Capable of rotary dispensing(R axis) and valve tilting
- Offers a variety of valves and nozzles, such as spray, film, needle, and jet valves, to fulfill all of our customers' specifications on coating and dispensing materials and resins

Data sheet

ASSELEC

automation company

PROEX



COATING MOBILE PHONE ASSEMBLY
DISPENSING SOLAR CELL ASSEMBLY
DRIVE MOTOR MODULE
AUTOMOBILES
RAILWAYS

ASSELEC



JANOME

CATÁLOGO JANOME

ROBOT DE
SOBREMESA
ROBOT DE DOBLE
MESA
JR300 SERIES
SERVOPRENSAS
(PRENSA ELÉCTRICA)
ROBOTS
CARTESIANOS
PRESENTADOR
AUTOMÁTICO DE
TORNILLOS
ROBOT DE
SOBREMESA SERIE
JR4000
JP 5
JP-S2

ROBOT LINE



JR300 Series

With superior versatility, desktop robots excel at the small lot, broad mix tasks necessary for cell production, including dispensing, assembly, depaneling, soldering, testing and more.

A desktop robot can semi-automate an assembly job process without changing the actual process, thereby improving both product quality and production efficiency.



- High precision, high rigidity, exact control.
- User-friendly teaching and operation.
- Various Communication Functions.

[Data sheet](#)



JR3000T Dual Table Robot

Twin table shortens wait times between jobs.



- Increased Robot Utilization.
- Lower Equipment Costs.
- Saves Space.

[Data sheet](#)



JR3000ERT/EBV-PCB cutter

You do not need a separate dust collector or external PLC. Built-in simple PLC function, reduces installation space.

The effective length of the slot (default 3.5 mm) and the number of divisions (from 2 to 9) can be adjusted, increasing the life of the cutter up to 9 times.



- Clean cuts and smooth trajectory control.
- Useful router bit replacement function.
- Security features.



iSerie i22X

Wide range of inspection uses also performs dip welding inspection. High-end technology since it has optical character recognition.



- Traceability
- Inspection range Up to 500mm
- Choose the lighting that best suits your application
- System configuration

[Data sheet](#)



iSerie JC-3

The JC-3 series Cartesian robot offers diverse functions and includes a dedicated, easy-to-use controller and a robot with a rich selection of stroke lengths for each axis.

Like our desktop robots, the JC-3 series features convenient installation settings. Programming is easy; With the interactive method programming console no complicated settings are needed.



- Comprehensive interface
- Control up to 4 axes and 2 external motors with auxiliary axis function
- Great compatibility with installation of vision systems
- Easy programming

[Data sheet](#)



Automatic trunk presenter

There are different models for manual screwdrivers and robotic screwdrivers; screw sizes M1.0~M5.0



- Easy swapping for greater versatility
- Wide compatibility
- Reliable dispensing
- Overload protection function
- External output signal
- Mounting plates for installation on robots
- Space saving



ASSELEC

JANOME



**SERVOPRENSAS
(PRENSA
ELÉCTRICA)**

ROBOTS JP 5
CARTESIANOS
PRESENTADOR ROBOT DE JP-S2
AUTOMÁTICO SOBREMESA
DE TORNILLOS SERIE JR4000
ROBOT DE ROBOT DE
SOBREMESA DOBLE MESA

**JR300
SERIES**

ASSELEC



TAEHA

CATÁLOGO TAEHA

AUTOMATION
BATTERIES
ELECTRONICS
MEDICAL
AEROSPACE
INDUSTRY

**TAEHA****ASSELEC**

PRO-PUMP SERIES / SPECS / DISPENSING / DISPENSING SYSTEM



PCP Series 1k PRO-PUMP

Progressive cavity pumps allow accurate metering/feeding/dispensing of materials that are difficult release due to their innovative structure and excellent precision.



- ROTOR: Single-threaded screw. Eccentric rotation when moving with stator
- STATOR: Double-threaded screw. Stator is fixed and forms a cavity (sealed space) when moving with rotor.
- CAVITY: (Sealed space)

[Data sheet](#)



PCP Series 2k PRO-DUO PUMP

Series is a compact and innovative 2-component dispenser that delivers excellent accuracy to the dispensing of difficult materials. This volumetric pump that allows the user to directly control the mix ratio of the 2-component materials



- Is installed when applying a static mixer to the PRO-DUO PUMP.
- It has different models depending on the type of static mixer and mix ratio of 2K materials.

[Data sheet](#)



SPEC-QV

The precision valves can dramatically reduce the dispensing time with the high-speed operation and non-contact jetting valves, and it's possible to dispense even a small amount with excellent precision ($\pm 2\%$).

The spray-discharge method does not affect the needle clearance (up to 30mm) and adopts a non-contact method that does not touch the product to be discharged, so there is no risk of product damage and there is no relation to the curvature of the product's surface.



- It can be applied to various low to medium viscous materials such as conformal coating, flux, grease, silver paste, tuffy, UV liquid and epoxy.
- The valve structure is simple, so product maintenance and equipment application are easy.

[Data sheet](#)



SPEC-PP

The pneumatic double-acting pump precisely measures and discharges low viscosity liquids (to 5,000 cps or less)

A stable and precise discharge is generated by selecting the appropriate plunger according to the dispensing volume.

There are a total of 5 models with maximum discharge volumes of 0.15, 1, 3, 5 and 10cc, which enable fine adjustment with a micrometer.



- High Precision.
- High Reliability.
- High Durability.
- High Responsiveness.
- Applicable Material.



SPEC-PC

As the canned liquid is transferred, no foreign substances or air bubbles are flowing in it. Air doesn't enter and contact doesn't occur due to the application of the special follow plate. Also, no remaining liquid is on the inner wall of the container. The application of a new concept of the highperformance piston pump achieves the best performance and improves efficiency by minimizing pulsation. The TWIN-POST RAM structure provides robustness and stability as the motor part and pump part are separated, it is easy to use and maintain.



- Excellent moisture barrier performance
- Excellent chemical resistance
- Excellent non-pollution
- Meets the US FDA's standards
- Operating temperature range: -30°C~70°C

[Data sheet](#)



MFS / MFE

Is a material supply-only equipment that transports and supplies 1-component and 2-component materials in a stable way. The device enables stable and economical process maintenance for a long period of time as it is possible to supply continuously and infinitely with one tank per material. It is a new concept of safety equipment that does not require industrial safety certification as it does not require compressed air. It is possible to freely adjust the vacuum degassing time, preheating function, and stirring function according to the characteristics of the materials.



- With the user interface of the touch screen and the dedicated software installed, it is easy for the operator to operate and maintain.



www.asselec.com.mx



TAEHA



PRO-PUMP SERIES / SPECS / DISPENSING / DISPENSING SYSTEM



DV SERIES

Excellent product quality control by owning a dedicated facility that processes and produces valve precision parts. Experience highly reliable metering valves that combine the expertise of TAEHA's long-standing dispenser with our unique valve design.



- Features Excellent for dispensing low-viscous material in a small and fine quantity.
- Low viscosity material such as reagent, solvent, flux, ink, electrolyte, etc



PROS-100,VDS

The in-line automation facility can be applied to various processes in industrial sites that require dispensing, such as under-fill, UV bonding, and epoxy molding. The system can transfer, align, apply a dispensing position, and dispense products with the all-in-one facility.



- Depending on the dispensing process, it is possible to select a dispenser suitable for materials such as silicone, epoxy,
- UV material, and acrylic.
- It is possible to select a variety of dispensers and material feeding devices, including barrel, cartridge, tank, pneumatic valve, plunger pump, PRO-PUMP and jetting valve.



THE Series

It adopts a high-performance microprocessor and high-speed air pulse circuit that produce a fast and stable liquid dispensing volume also is a smart dispensing control equipment made with extensive experience and technical expertise.



- Superior reliability and durability with only a few minor failures.
- Small and compact design for easy installation
- Great functions at a reasonable price vacuum function available.



RDU-200

This is a machine for circular coating application that dispenses the fluid materials in a fixed quantity in a circumferential shape by rotating the work required for a circular coating application on a turntable.



- There is no condensation after dispensing due to the electronically driven vacuum function.
- Possible to finely adjust by adopting a micrometer in the UP/DOWN part.
- Compact design for easy installation.



PRO-CP

It is a facility that can feed materials cleanly without mixing foreign substances or air bubbles by transferring the material contained in the container as it is. High viscosity liquids can be transported with high precision over long distances, and materials in a fixed amount are precisely fed by adopting an electric motor method instead of a drive method using air.



- It is very economical because up to 1% of the remaining liquid in the container can be used.
- With the application of AUTO AIR VENT, air bubbles are automatically eliminated
- Various alignments are provided depending on the size of the CAN container.

[Data sheet](#)



www.asselec.com.mx



ASSELEC

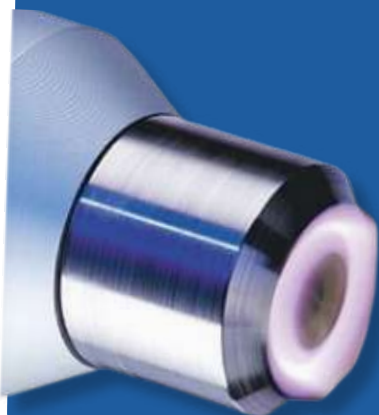
 **TAEHA**



AUTOMATION
BATTERIES
INDUSTRY
ELECTRONICS
MEDICAL AEROSPACE



 **plasmamatreat**



 **TAEHA**



 **Brighton
Science**

DELO



JANOME



automation company
PROEX



 **ASSELEC**

DYNE INKS / PENS/ LUER LOCKS



Surface tension

To obtain optimum surface wetting with a liquid (printing ink, adhesive), a substrate's surface tension is considered as the major parameter. The surface tension is considered as a relative measure for evaluating the printing ink coverage and the expected bonding of the printing ink, a layer of adhesive or some other coating on the substrate.



- Plastics have a low surface tension between < 28 mN/m and 40 mN/m.
- Experience has shown, only surface tensions starting at 38- 42 mN/m facilitate good adhesion conditions.



Using test inks

Dual-curing adhesives offer the benefits of light-curing systems. Test ink is applied quickly to the surface. A high surface tension is initially employed after pre-treatment.



- If the brush stroke edges of the test ink contract (shrink) then gradual steps should be used to obtain a surface tension resembling that of the material that is being examined.
- The surface tension of the test ink with which the surface is being moistened matches the sought after surface tension.
- The test ink with the next higher surface tension no longer moistens then.



Cartridge

This kind of dispensing syringe specially designed non-slanting vertical wall screw teeth clear and uniform, the needle is easy to tighten, not easy to fall off, in the dispensing with a special piston, so that the liquid in the syringe clean without residual glue.



- Available in three colors: transparent for general fluids; tan for UV adhesive (covering 280 to 390nm wavelength), and black for photocurable adhesive with UV protection.



Needles

The Sem-Luer needles are constructed with rigid stainless steel, blunt-end tubing.



- All needles are manufactured with plastic, international color coded hub for easy size identification. These products are precision manufactured for micro-dot and bead application.



Luer locks needles

Luer Lock is an industry standard tapered termination utilized by most syringe manufacturers including medical Hypodermic syringes. They are common because their design is controlled by a series of universal standards which guarantees compatibility between manufacturers.



- Luer Lock syringes are ideal for electronic and various other small assembly operations where adhesives, solder pastes and masks, sealants, potting compounds, greases and many other materials are used.



Mixing tubes

Mix solvents and water-based liquids. Also known as static mixers, these install in your pipeline and mix liquid as it passes over fixed spiral blades. They have no moving parts and require no external power source. The body is semi-clear for monitoring the condition of the mixer.



- Multiply flow rate (gpm)
- Multiply specific gravity by total.
- Multiply viscosity (cp) by pipe ID (inches)
- Divide total

WIPERS

Wiper tapes

A range of tapes with different features is available for the Wiper series devices.

The information in this data sheet is recommendations only. Which tape is best suited for a particular application can only be determined by tests in the real application.



- The Cleaning tape cotton is suitable for universal use.
- It has a great absorbency due to the naturally grown fibres.

Data sheet

Wiper II

Wiper II automatically cleans soiled needles, nozzles or mixer tubes on dispensing equipment.

On the top of the cleaning station there is a gripper mechanism with flexible gripper jaws which are covered by a textile tape.



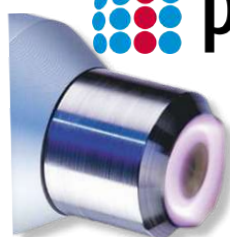
- Cleaning of needles from 2 mm possible, needle OD up to 2 mm, larger OD with special kit
- Tape consumption can be adapted to suit needle length respectively application
- LED lights up and digital signal output before and on tape end and on failure

Data sheet

ASSELEC

 TAEHA

 plasmatreat



 Brighton
Science

DELO

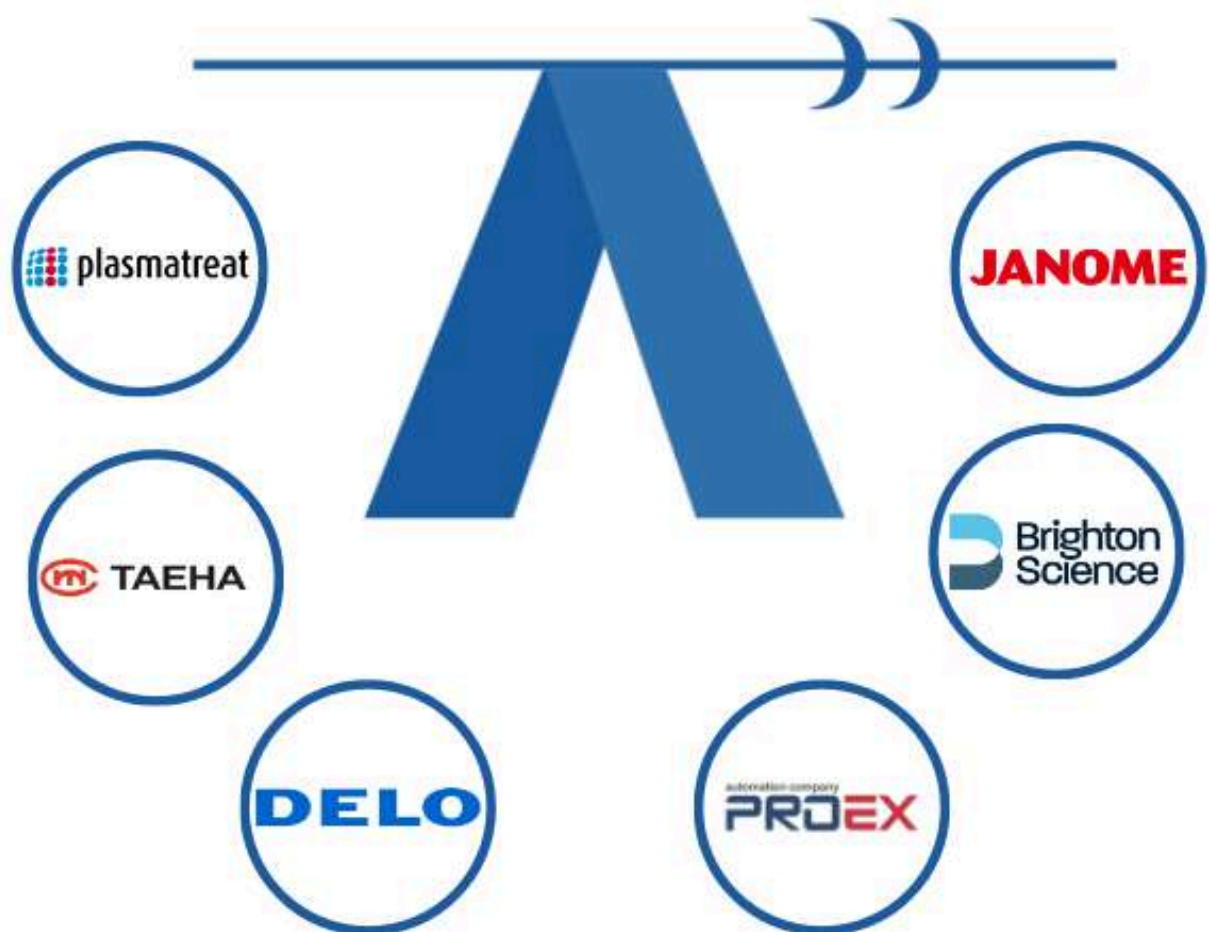
automation company

PROEX

JANOME



PARTNERS





Contáctanos

SAN LUIS POTOSÍ, S.L.P

Calle 24 de Febrero 1380,
Laguna de Santa Rita, S.L.P.
Phone: +52 (444) 799-513
E-mail: sales@asselec.com.mx

GUADALAJARA, JALISCO

Calle Rio altea 7 123, Cartagena
Aalicanne Cortijo San Agustin, JAL.
Phone: +52 (33) 9690-9649
Mobile: +52 (33) 3258-0614
E-mail: sales@asselec.com.mx

MONTERREY, N.L

Calle brazilia 212 Rio de Janeiro
Guayaquil Paraje Santa Rosa,
Apodaca N.L, N.L
Phone: +52 (81) 4285 0817
E-mail: sales@asselec.com.mx